

# 11th SAMOYED NATIONAL OFFICIAL MERCHANDISE

All merchandise:

- \* Will have the National logo
- \* All orders to be submitted and paid by  
Sunday 31 March 2019
- \* To be collected at the National #
- \* Payment to be made at time of ordering

# Merchandise can be ordered and mailed—P&H \$20.

Will be mailed on 24 April 2019.

Payment Details:

- \* Cheques made payable to Samoyed Club of Vic Inc
- \* Direct Deposit—Use surname as reference

BSB: 033 146 Acct Number: 891820

# 11th SAMOYED NATIONAL

## SOUVENIR CATALOGUE

*Containing 3 Generation Pedigree of every exhibit*

**Order Details  
for non exhibitors**

**Don't take the risk at the  
show of there being none  
available.**

**\$25 Pre Ordered by 31 March 2019**

**\$30 on day — *very limited number available***

# 11th SAMOYED NATIONAL

## OFFICIAL LIMITED PLATE

PLATES NUMBERED 1—80

\$ 50.00 each

Plates allocated as paid orders are  
received

Plates to be collected at National or  
Mailed—P&H \$ 20.00



## PS08/PS48A LIBERTY POLO \$ 35.00

Poly/Cotton Contrast Pique Short Sleeve Polo

POLY/COTTON PIQUE - 240gsm 65% Polyester. 35% Cotton

Contrast colour polo, Contrast colour on collar, cuffs & placket

**AVAILABLE COLOURS - NAVY/WHITE - BLACK/WHITE—RED/WHITE**

PS08 Men's Contrast Pique Short Sleeve Polo

Easy Fit	XS	S	M	L	XL	2XL	3XL	4XL	5XL
Half Chest	51	53.5	56	58.5	61	63.5	66	68.5	71
Body Length	69	71.5	74	76.5	79	81.5	84	86.5	89

PS48A Ladies' Contrast Pique Short Sleeve Polo

Modern Fit	6	8	10	12	14	16	18
Half Chest	42	44.5	47	49.5	52	55	58
Body Length	58	60	62	64	66	68	70

+++++

## PS43/PS44 CHAMPION PLUS \$ 40.00

CoolDry Long Sleeve Contrast Colour Polo

CoolDry Mesh - 165gsm 100% Polyester

Breathable diamond knitted fabric. Long raglan sleeves. Contrast piping on sleeve seams and collar.

**COLOURS - NAVY/WHITE - BLACK/WHITE — RED/WHITE**



PS43 Men's CoolDry Raglan Long Sleeve Contrast Polo

Easy Fit	S	M	L	XL	2XL	3XL	4XL	5XL
Half Chest	53.5	56	58.5	61	63.5	66	68.5	71
Body Length	70	72	74	76	78	80	82	84

PS43 Ladies' CoolDry Raglan Long Sleeve Contrast Polo

Modern Fit	8	10	12	14	16	18
Half Chest	46	48.5	51	53.5	56	58.5
Body Length	62	64	66	68	70	72



## PS61/PS62 ALLIANCE POLO \$ 35.00

CoolDry Contrast Short Sleeve Polo with Sleeve Panels

CoolDry Mini Waffle - 160gsm 100% Polyester

Stylish flat knitted collar. Contrast panels on sides, sleeves, inside placket and on collar

**COLOURS - NAVY/WHITE & BLACK/WHITE**

PS61 Men's CoolDry Contrast Polo with Sleeve Panels									
Easy Fit	XS	S	M	L	XL	2XL	3XL	4XL	5XL
Half Chest	51	53.5	56	58.5	61	63.5	66	68.5	71
Body Length	67.5	70	72.5	75	77.5	80	82.5	85	87.5
PS61 Ladies CoolDry Contrast Polo with Sleeve Panels									
Modern Fit	8	10	12	14	16	18			
Half Chest	43.5	46	48.5	51	53.5	56			
Body Length	60	62	64	66	68	70			

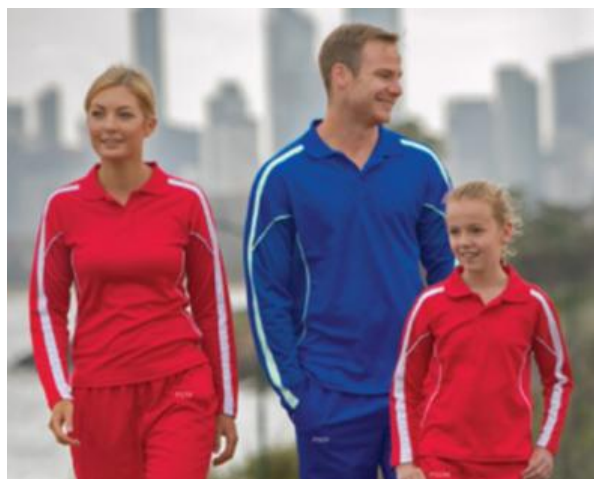
## PS69/PS70 LEGEND PLUS \$ 40.00

TrueDry Fashion Long Sleeve Polo

TrueDry Cotton Backing Mesh 160gsm - 60% Cotton & 40% Polyester

Breathable mesh panels under arms & on sides. Long sleeves, contrast panels & piping on shoulders and sleeves - front & back

**COLOURS - NAVY/WHITE – BLACK/WHITE – RED/WHITE**



PS61 Men's CoolDry Contrast Polo with Sleeve Panels									
Easy Fit	XS	S	M	L	XL	2XL	3XL	4XL	5XL
Half Chest	51	53.5	56	58.5	61	63.5	66	68.5	71
Body Length	67.5	70	72.5	75	77.5	80	82.5	85	87.5
PS61 Ladies CoolDry Contrast Polo with Sleeve Panels									
Modern Fit	8	10	12	14	16	18	20	22	24
Half Chest	43.5	46	48.5	51	53.5	56	58.5	61	63.5
Body Length	60	62	64	66	68	70	72	74	76



### JK23/JK24 SOFT SHELL JACKET \$ 60.00

Softshell Sports Jacket

BONDED SOFTSHELL - 340gsm Shell face 90% Polyester. 10% Elastene, Shell back 100% Polyester Water/wind resistant.

Breathable, tough wearing, insulative, comforting Tricot Brushed

Fabric on storm flap.

**AVAILABLE COLOURS - NAVY , BLACK & CHARCOAL**

JK23 Men's Soft Shell Jacket								
Modern Fit	S	M	L	XL	2XL	3XL	4XL	5XL
Half Chest	57	59.5	62	64.5	67	69.5	72	74.5
Body Length	68.5	70.5	72.5	74.5	76.5	78.5	80.5	82.5
JK24 Ladies Soft Shell Jacket								
Modern Fit	8	10	12	14	16	18		
Half Chest	51.5	54	56.5	59	61.5	64		
Body Length	59	61	63	65	67	69		

### JK25/JK26 SOFT SHELL VEST \$ 50.00

Softshell Hi-tech Vest

BONDED SOFTSHELL - 340gsm Shell face 90% Polyester. 10% Elastene, Shell back 100% Polyester

Water/wind resistant. Breathable, tough wearing, insulative.

**AVAILABLE COLOURS - NAVY , BLACK & CHARCOAL**



JK25 Men's SOFT SHELL VEST						
Modern Fit	S	M	L	XL	2XL	3XL
Half Chest	56	58	60	62	64	66
Body Length	67.5	69.5	71.5	73.5	75.5	77.5
JK26 Ladies' SOFT SHELL VEST						
Modern Fit	8	10	12	14	16	18
Half Chest	48	50	52	54	56	58
Body Length	59	61	63	65	67	69



**JK01 UNISEX STADIUM JACKET \$ 60.00**

Unisex Stadium Jacket

OXFORD SHELL - 155gsm Outer 100% Polyester. Inner 100% Polyester Polar Fleece

Water repellent, hideaway hood. Front zip under press studded storm flap

**AVAILABLE COLOURS - NAVY - NAVY/SILVER - BLACK—BLACK/RED**

JK01 Unisex Stadium Jacket							
Easy Fit	XS	S	M	L	XL	2XL	3XL
Half Chest	58	62	65	68	71	74	77
Body Length	72	75	78	81	84	87	90

+++++

**JK47 Adult's Heavy Quilted Vest \$ 50.00**

100% Polyester

Pongee shell with polyester inners and front zipper

**AVAILABLE COLOURS - NAVY & BLACK**



JK47 Adult's Heavy Quilted Vest										
Modern Fit	8/2XS	10/XS	12/S	14/M	16/L	18/XL	20/2XL	22/3XL	26/5XL	30/7XL
Half Chest	51.5	54.5	57.5	60	62.5	65	67.5	70	75	80
Body Length	61/66	64/69	67/72	69/74	71/76	73/78	75/80	77/82	78/83	79/84



### JK77 Arena Jacket \$ 70.00

Nylon rip-Stop Jacket

Nylon Rip Stop - 105gsm - 100% Polyester Rip-Stop with PU Coating. Breathability

Concealed hood, two side pockets with zip closure

**AVAILABLE COLOURS - NAVY /ROYAL, BLACK/GREY, BLACK/ROYAL**

JK77 Arena Jacket Unisex										
Modern	10/2XS	12/XS	14/S	16/M	18/L	20/XL	22/2XL	24/3XL	26/5XL	28-
Half Chest	51.5	54.5	57.5	60	62.5	65	67.5	70	75	80
Body Length	68	70	72	74	76	78	80	82	84	86

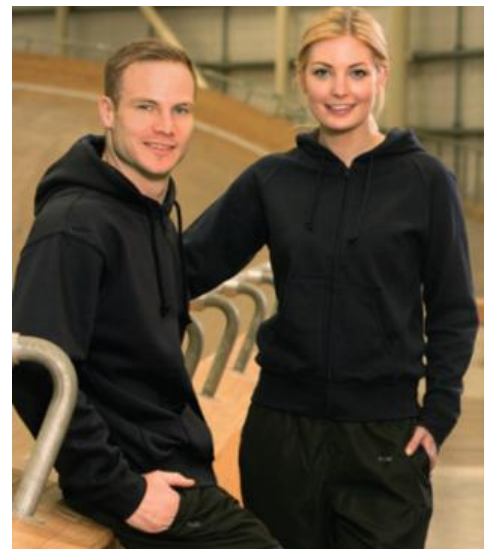
### FL03/FL04 DOUBLE BAY \$ 50.00

Full Zip Fleecy Hoodie

Fleece 340gsm - 80% Cotton 20% Polyester

A traditional fleecy hoodie with full-zip in the centre front. 2 pockets

**COLOURS - BLACK & NAVY**



FL03 Men's DOUBLE BAY HOODIE								
Easy Fit	XS	S	M	L	XL	2XL	3XL	5XL
Half Chest	57.5	60	62.5	65	67.5	70	72.5	77.5
Body Length	68	70	72	74	76	78	80	82
FL04 Ladies DOUBLE BAY HOODIE								
Modern Fit	8	10	12	14	16	18		
Half Chest	46.5	49	51.5	54	56.5	59		
Body Length	60	62	64	66	68	70		



## PF09/PF10 DIAMOND \$ 50.00

Bonded Fleece Vest

Bonded Polar Fleece 350gsm - 100% Polyester

Anti-Pill Polar Fleece.

**COLOURS - BLACK & NAVY**

PF09 Men's Bonded Polar Fleece Vest								
Modern Fit	S	M	L	XL	2XL	3XL	4XL	5XL
Half Chest	56.5	59	61.5	64	66.5	69	71.5	73
Body Length	63	66	69	72	75	78	80	82
PF10 Ladies' Bonded Polar Fleece Vest								
Slim Fit	8	10	12	14	16	18		
Half Chest	44	47	50	53	56	59		
Body Length	57	60	63	66	69	72		

+++++



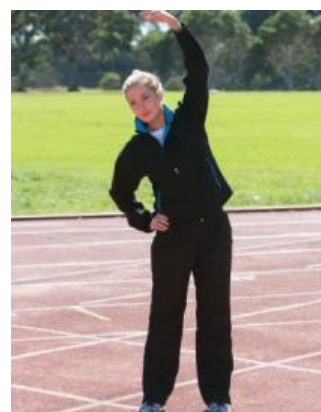
## JK15/JK16 SHEPHERD \$ 55.00

Polar Fleece Jacket

SHERPA FLEECE - 420gsm 100% Polyester.

Anti-Pill Micro Fleece lined with contrast colour Sherpa fleece on inside to provide comfort and warmth.

**AVAILABLE COLOURS – NAVY/CREAM - BLACK/CHARCOAL**



PF15 Men's Shepherd Polar Fleece Jacket						
Modern Fit	S	M	L	XL	2XL	3XL
Half Chest	60	62.5	65	67.5	70	72.5
Body Length	69	72	75	78	81	84
PF16 Ladies' Shepherd Polar Fleece Jacket						
Slim Fit	8	10	12	14	16	18
Half Chest	49.5	52	54.5	57	59.5	62
Body Length	63.5	65.5	67.5	69.5	71.5	73.5

**JK27 CHALET JACKET    \$ 60.00**

Fabric: Nylon Taslo, Micro Polar Fleece,  
Outer - 100% Nylon, Inner - 100% Polyester .

Two chest concealed pockets with zip closure. Two side zippered pockets. One lining pocket with velcro closure. Concealed hood. Back concealed ventilation mesh. Velcro adjustments on sleeves. Hem strings with adjustment tabs.

**COLOUR—NAVY & BLACK**



PF09 Men's Bonded Polar Fleece Vest								
Modern Fit	S	M	L	XL	2XL	3XL	4XL	5XL
Half Chest	57.5	60	62.5	65	67.5	70	72.5	80
Body Length	71/75	73/77	75/79	77/81	79/83	80/84	81/85	82/88



**AP03 BIB APRON    \$ 25.00**

Fabric:  
Polyester / Cotton Twill 260gsm-65% Polyester, 35% Cotton  
Description:  
Hard wearing with pocket & adjustable neck strap. Size: (w)70 x (h)86 cm  
COLOUR: **BLACK or WHITE**

**TW02 HAND TOWEL    \$20.00**

Fabric: Yam Dyed Cotton 580gsm-100% Cotton  
Description: 100% Cotton yarn dyed towel with dobby border.  
With terry towel on both sides.  
Size: 60 x 40 cm 140gm weight.

**COLOUR: BLACK — NAVY**



**SCF02 CABLE KNIT SCARF \$ 25.00**

Acrylic 166gm—100% Acrylic

Acrylic knit with cable row feature.

Size: 110cm x 18cm

**COLOUR—BLACK, CHARCOAL & NAVY**



+++++



**B2100 IMPACT CASUAL BAG \$ 40.00**

100% Cotton Canvas

W 58cm x H 35cm x D 25cm - 50 Litres Capacity

Canvas with contrast colour strap, carry handles and piping. One large compartment with a double zip closure. Adjustable/detachable shoulder strap.

**COLOUR: BLACK/BLACK, BLACK/NATURAL, NAVY/NEUTRAL & NAVY/NAVY**

# 2019 SCV SAMOYED NATIONAL MERCHANDISE

**scvnational2019@optusnet.com.au**

**To be ordered by 31 March 2019.**

**Name:** .....

**Address:** .....

**Phone:** .....

**Email:** .....@.....

To be collected at the National: Yes / No

Mailed: Yes / No

Style No.	Size	Colour	Qty	Price
				\$
				\$
				\$
				\$
				\$
				\$
				\$
				\$
				\$
				\$
				\$
				\$
				\$
Souvenir	Catalogue	@ \$25 each		\$

Direct Debit:

SCV Inc

**BSB: 033 146**

**Acct:**

Cheques made

Payable to :

**Samoyed Club**

**Of Victoria Inc**

Sub Total	\$
add P&H*	\$

Total	\$
-------	----